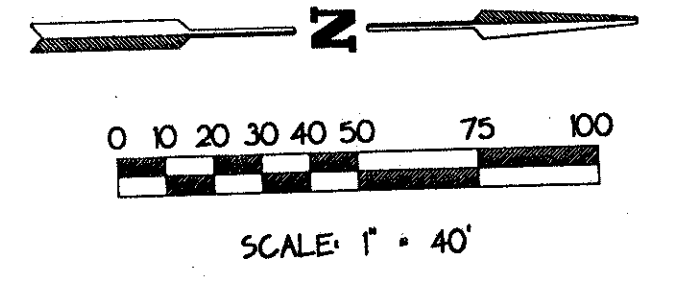
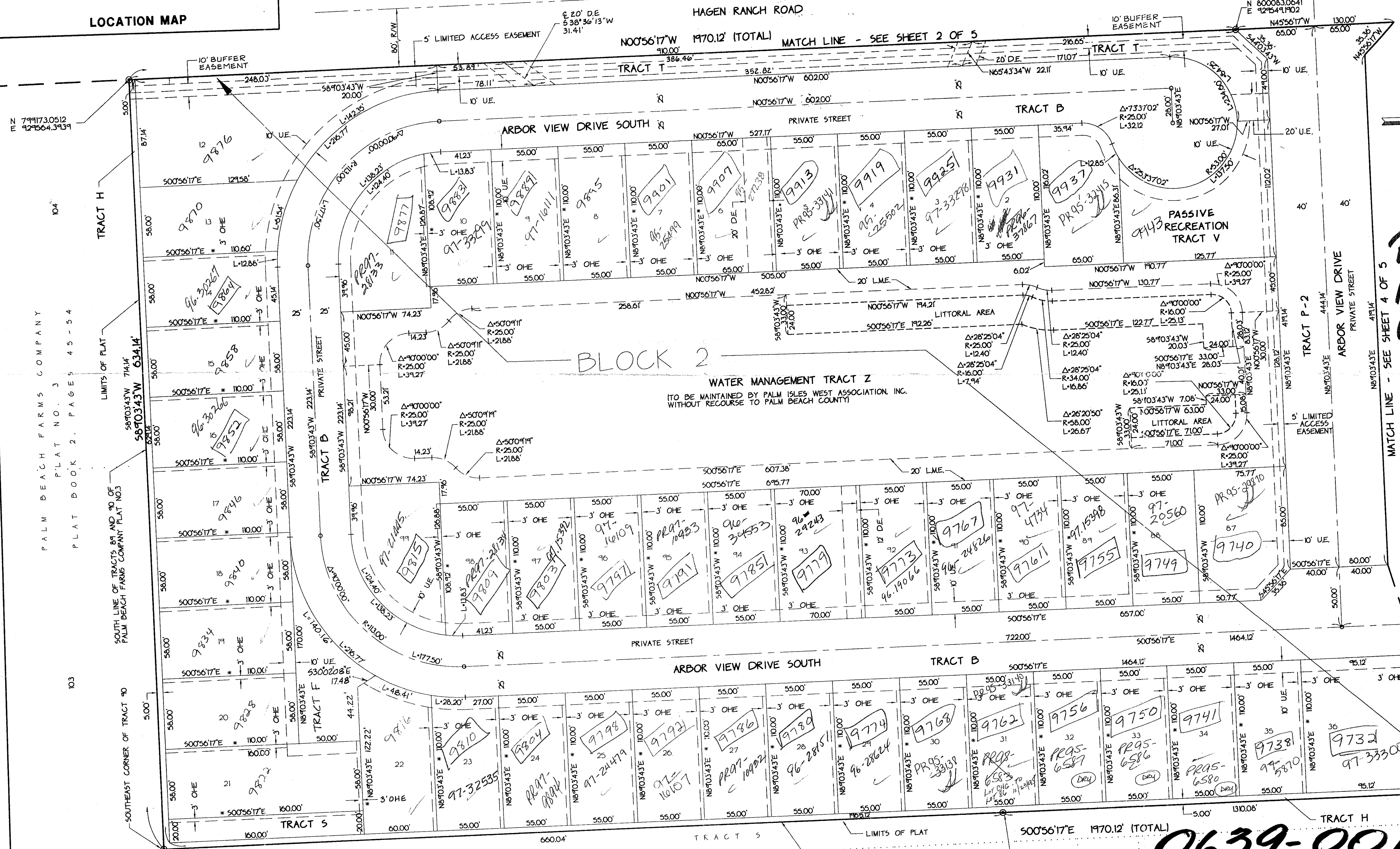
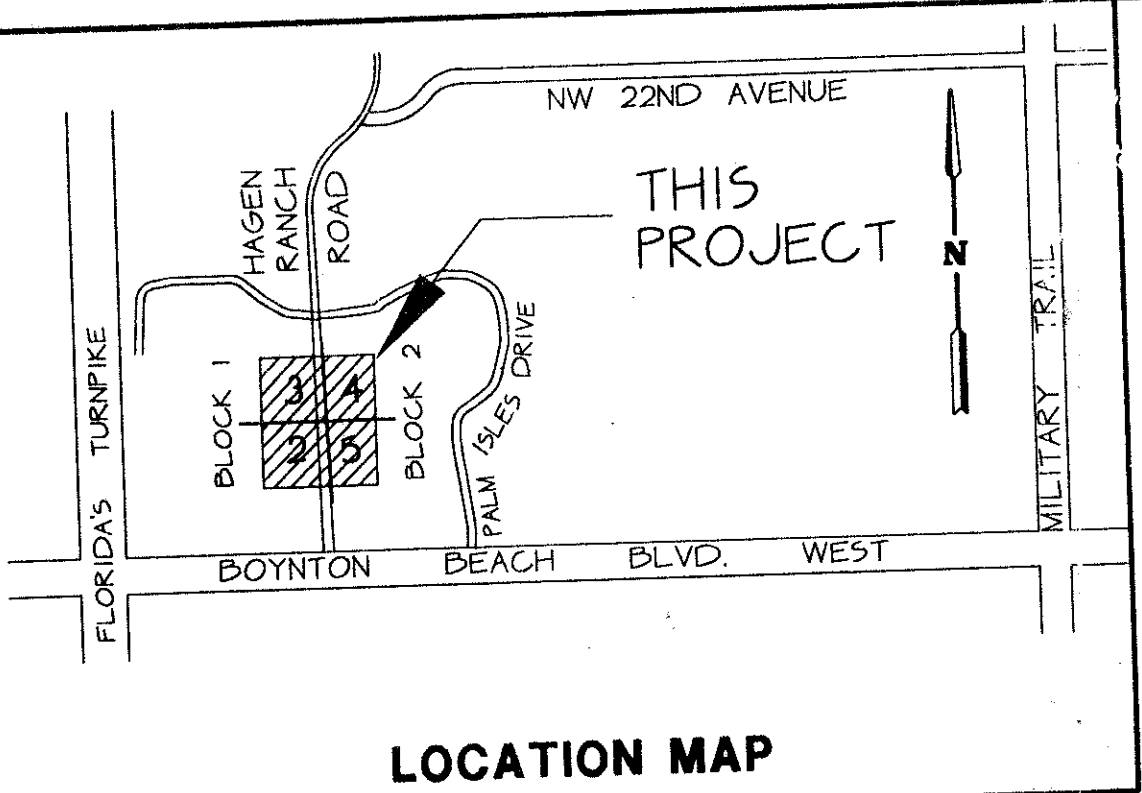


PALM ISLES WEST

A REPLAT OF TRACTS 55 THROUGH 58, 71 THROUGH 74 AND 87 THROUGH 90, BLOCK 49 OF PALM BEACH FARMS COMPANY PLAT NO. 3, AS RECORDED IN PLAT BOOK 2, PAGES 45 THROUGH 54 INCLUSIVE OF THE PALM BEACH COUNTY RECORDS ALL IN SECTION 21, TOWNSHIP 45 SOUTH, RANGE 42 EAST

THIS INSTRUMENT PREPARED BY JAMES E. PARK, P.L.S. WILLIAMS, HATFIELD & STONER, INC. - ENGINEERS PLANNERS SURVEYORS 1901 SOUTH CONGRESS AVENUE, SUITE 150, BOYNTON BEACH, FLORIDA 33426

SHEET 5 OF 5



*RET. 94-18
Alloc. #0001 +
NO SCHOOLS
Per Y.B. 4/14/95
5/2/2/I*

SUBDIVISION * Palm Isles West
BOOK 75 PAGE 87
FLOOD ZONE B FLOOD MAP # 185A
QUAD # 50 ZONING RTU
SE ZIP CODE 33437
PUD NAME Same
2/14/42

TAZ-443

0639-001
PALM ISLES WEST 75/87